

We are making house &
 Deliver Homes

Over 10 years now
OMM Tech Properties Pvt.Ltd. has been involved in a wide range of Construction, Project Development & Hospitality Business etc. and learn the recipe for customer delight. Our first priority is to understand the end needs of a customer and your expectation to achieve with the place you want to stay in. It is not just about to develop a project, it is about contributing happiness to your life.

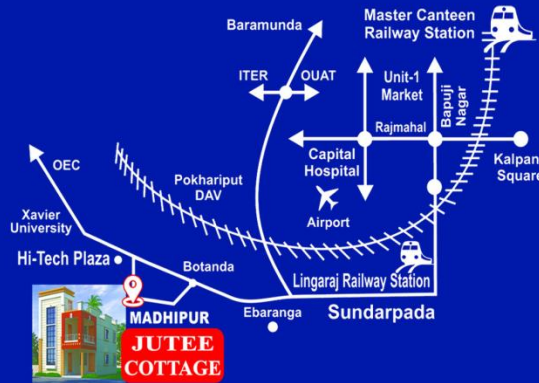
With "integrity" as the hallmark of our existence, we present "Jutee Cottage", a 4BHK residential Duplex project designed meticulously keeping in mind the necessities of present days life style to accomodate Two families independently. "Jutee Cottage" is the right address of a home which you own with no hassles whatsoever and your heads held high.

It is not an architectural marvel thought, our designers have burnt sufficient midnight oil to craft "Jutee Cottage" that suits your culture, taste and style while maintaining a blend of affordability and quality.



OMM Tech Properties Pvt.Ltd.
 A Perfect Engineering solution

LOCATION MAP



Distance from Major Landmark

Railway Station.....	3.5km
DAV School.....	3.5km
Airport.....	4.5km
Ekamra College.....	6.5km
XUB.....	6.5km
Lingaraj Temple.....	7km
O.E.C.....	7.5KM
Capital Hospital.....	8km
Market Building.....	8km

OMM Tech Properties Pvt. Ltd.

Flat No - 401, Pratisruti, Canal Road , Jharapada
 Bhubaneswar- 751006 Mob. +91 80181 51797

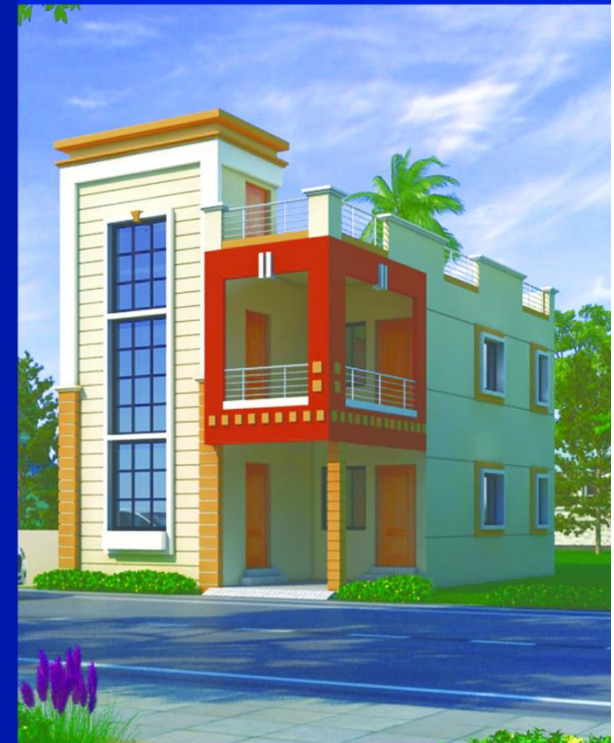
Email-Id : info@ommtechproperties.com

Website : www.ommtechproperties.com

Jutee Cottage



In search of a Pretty world..



OMM Tech Properties Pvt.Ltd.
 A Perfect Engineering solution



SPECIFICATION

Foundation : Earthquake resistant frame / load bearing structure.

Structure : R.C.C Frame Structure with columns & beams.

Wall : Fly ash bricks / Concrete bricks

Painting : Internal Putty finishing with emulsion paint and weather coat paint on all outer wall as per design.

Flooring : Vitrified tiles in all rooms and ceramic tiles in balconies & bathrooms.

Doors : Main door (Design door) and all other internal doors are flush doors finished.

Window : Powder coated aluminum sliding windows.

Electrification : Modular Electrical Switches, TV Points and AC points in all Bed rooms.

Sanitary : ISI mark C-PVC pipe in all internal wall and UPVC for all water supply and UPVC for Sewerage Lines.

Staircase : Anti skid tile with SS hand rail.

Sewerage

System : Septic tank with soak pit.

Be assured of courtesy and care.. .